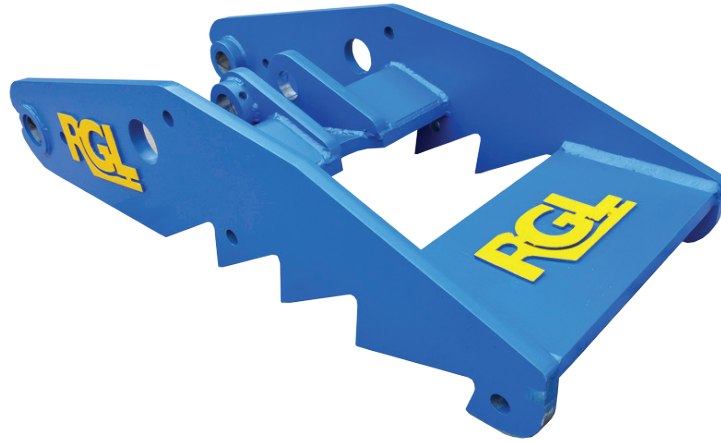


RGL Hydraulic Order Form



Name:

Company Name:

Email:

Phone Number:

Quick Hitch Type:

Select the quick hitch drawing that has the same main pin bolt positioning as your digger.

Measurement A:

A: Dipper Centre to Outer Face of Quick hitch

Measurement B:

B: Dipper Centre to Outer Boss Face

Measurement C:

C: Main pin bolt hole centre from dipper centre

Measurement D:

D: Outer Boss Size

Measurement E:

E: Main Pin Size

Measurement F:

F: Take the measurement from the centre of your dipper pin to the point of your bucket tooth.

Notes:

Order Date:

Signature:

Quick Hitch Types

Select the quick hitch drawing that has the same main pin bolt positioning as your digger.

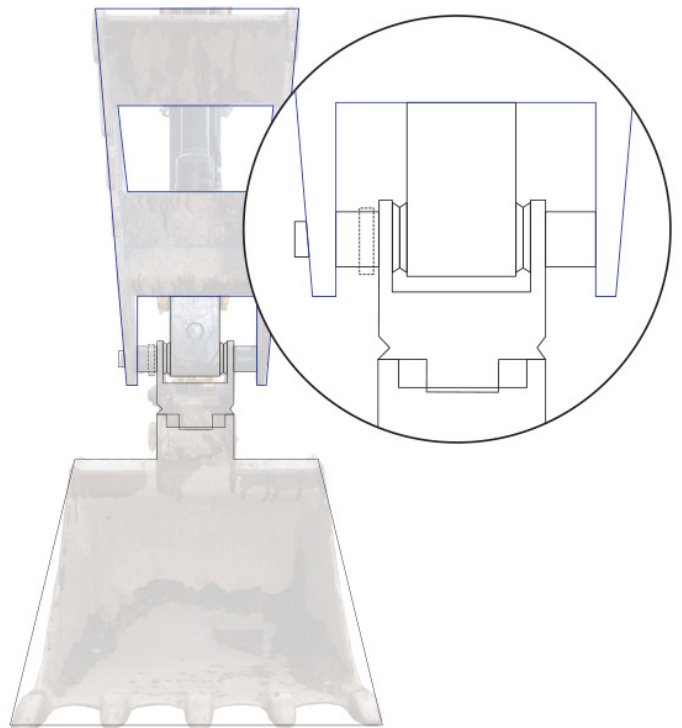
Quick Hitch Type 1

Main Pin bolt right as viewed from excavator cab



Quick Hitch Type 2

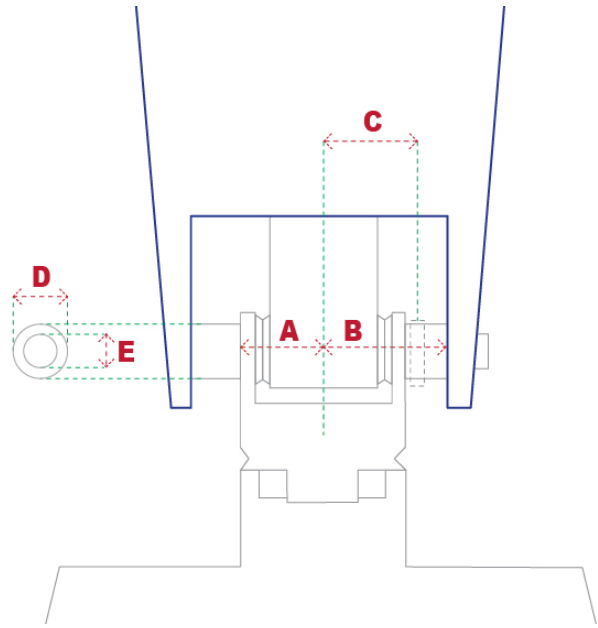
Main Pin bolt left as viewed from excavator cab



Measurements

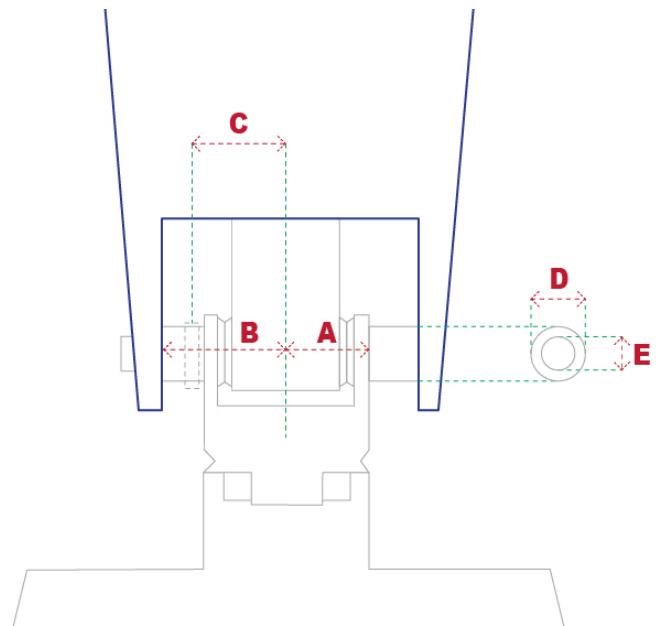
Quick Hitch Type 1

Main Pin bolt left as viewed from excavator cab



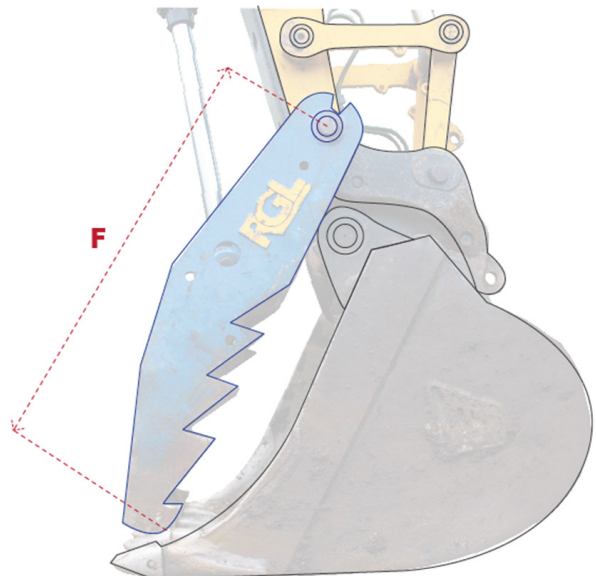
Quick Hitch Type 2

Main Pin bolt left as viewed from excavator cab



Bucket

Make sure you have fitted the bucket that you will be using most with the thumb.



How to Measure Guide

Get someone to hold the straight edge so you can take accurate measurements

Start by measuring the width of your dipper, half this measurement and mark the dipper centre with a thin tipped marker pen. (This mark has to be accurate as the following measurements you take from this centre mark for A , B and C will determine the width we build your thumb)

Measurement A

Take the Measurement from your dipper centre line to the outer face of your quick hitch (opposite the side that the bolt goes through the pin) All quick hitch's differ by design and yours may have a flat side where the pin exits or it may have a round boss sticking out. Be sure to measure the face that the pin exits from (do not include the pin in your measurement) get someone to hold a straight edge on the face of the quick hitch.

Measurement B

Repeat the process as per 'Measurement A' but this time measure the outer face of the boss that has the pin retaining bolt going through it. Again, do not include the pin in this measurement, only the outer boss face and get someone to hold the straight edge.

Measurement C

Take the measurement from the dipper centre to the centre of your pin retaining bolt which will be in the middle of the boss you have just measured in 'Measurement B' (we supply a new longer pin with your thumb order and we need this measurement to drill the pin retaining bolt hole).

Measurement D

Measure the outer dimension of your boss on your quick hitch where the pin exits

Measurement E

Measure your pin outer diameter. These should be standard pin sizes. ie, 65mm ,80mm , etc

Measurement F

Ensure you have the bucket fitted to the machine that you intend on using with the thumb most frequently. Measure from the centre of the quick hitch pin to halfway up the bucket tooth.